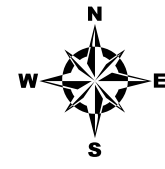




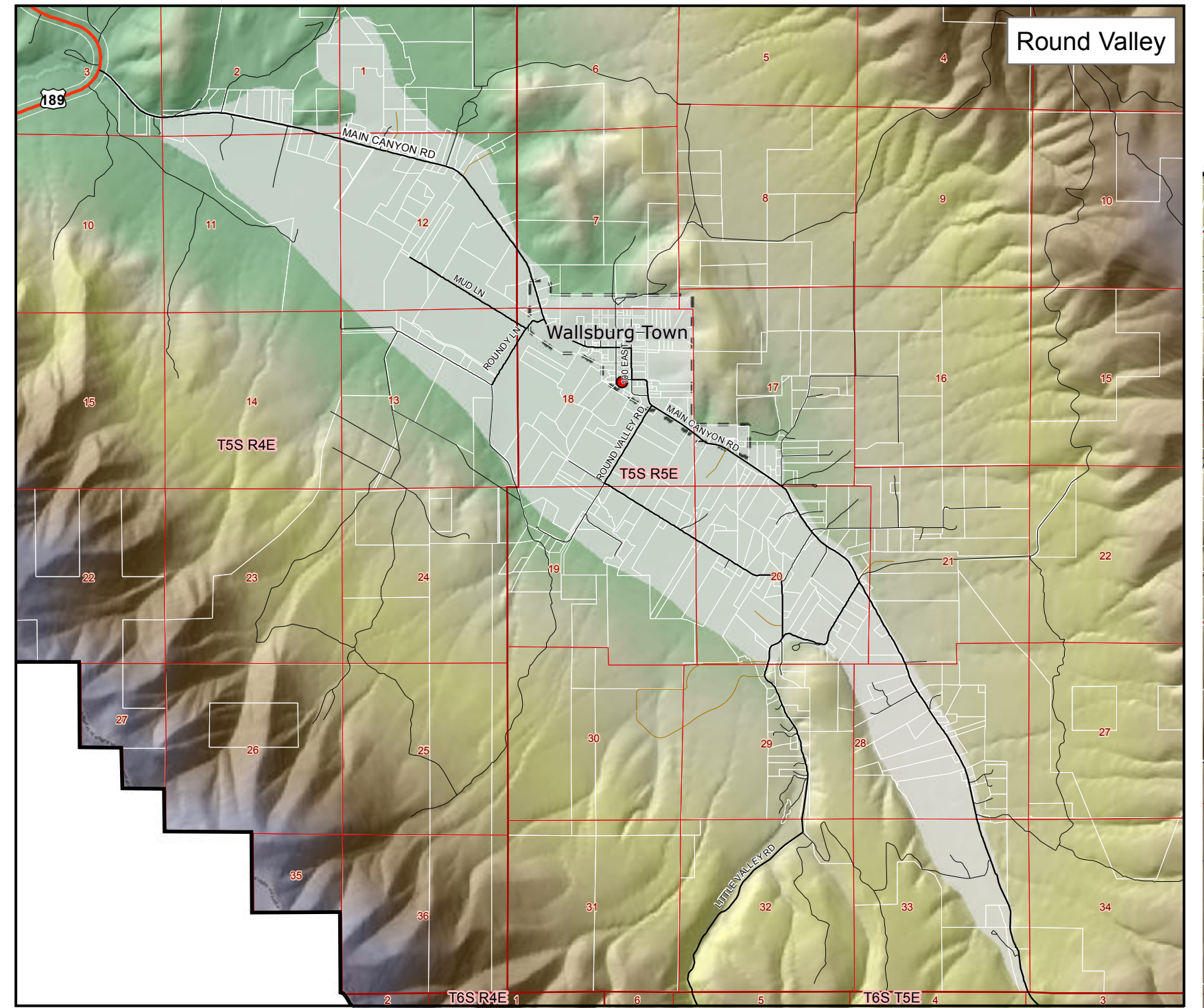
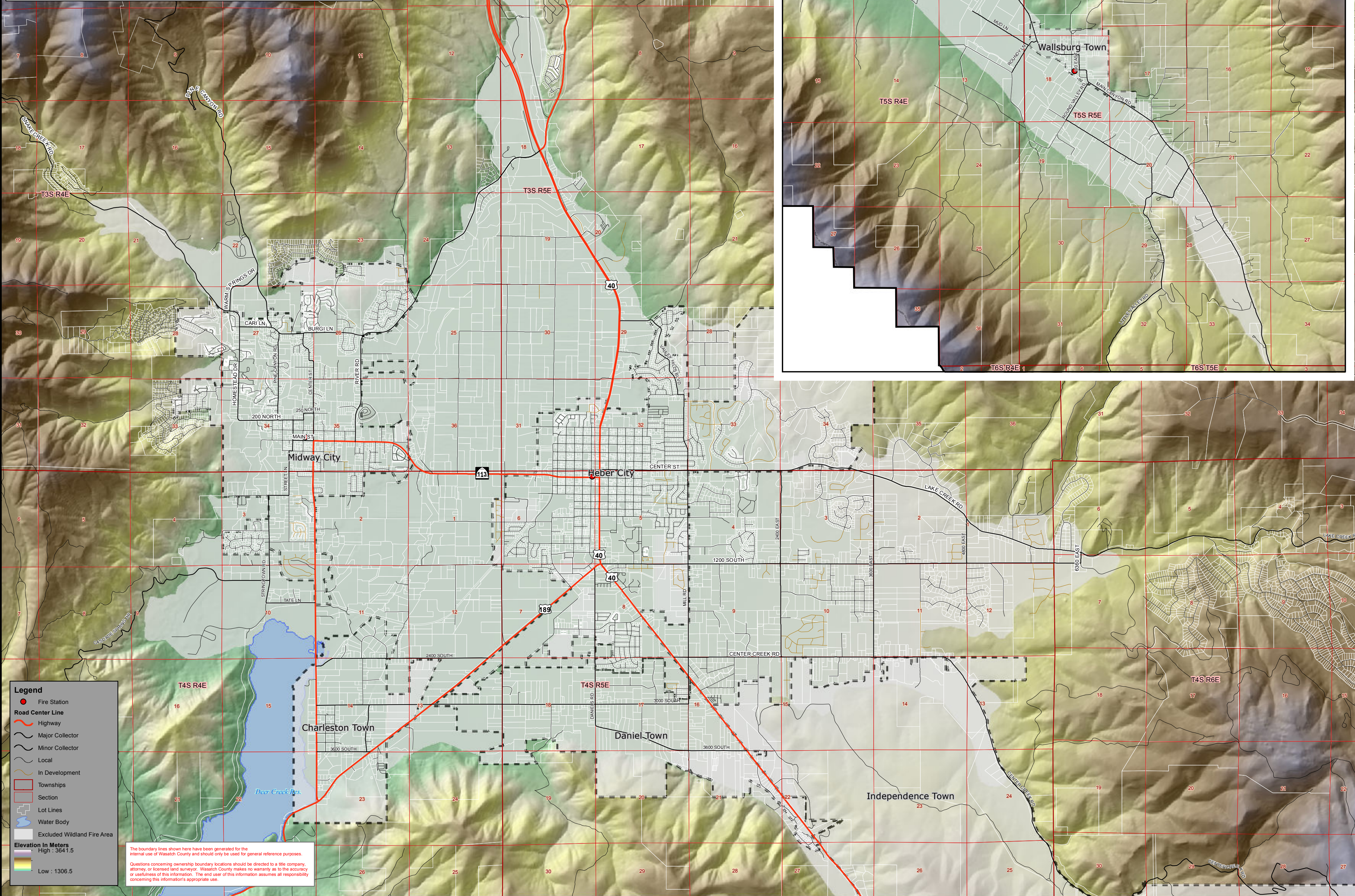
Wasatch County

Wildland Urban Interface Map

2009 Aerial Photo



Printed: September 2, 2011



Legend

- Fire Station
- Road Center Line
- Highway
- Major Collector
- Minor Collector
- Local
- In Development
- Townships
- Section
- Lot Lines
- Water Body
- Excluded Wildland Fire Area

Elevation in Meters

High : 3641.5

Low : 1306.5

The boundary lines shown here have been generated for the internal use of Wasatch County and should only be used for general reference purposes. Questions concerning ownership boundary locations should be directed to a title company, attorney, or licensed land surveyor. Wasatch County makes no warranty as to the accuracy or usefulness of this information. The end user of this information assumes all responsibility concerning this information's appropriate use.